

Open Space Advisory Board

Agenda

March 30, 2026

City Council Chambers

749 Main Street, Louisville CO

6:45 PM

Members of the public are welcome to attend and give comments remotely; however, the in-person meeting may continue even if technology issues prevent remote participation.

- *Call in to: +1 346 248 7799 or +1 408 638 0968 or 877 853 5247 (Toll Free)
Webinar ID: 883 3175 6380 or*
- *You can log in via your computer. Please visit the City's website here to link to the meeting: www.louisvilleco.gov/osab*

The Council will accommodate public comments during the meeting. Anyone may also email comments to the Council prior to the meeting at EmberB@LouisvilleCO.gov.

1. 6:45 pm Call to Order
2. Roll Call
3. Approval of Agenda
4. Approval of Minutes
5. 6:55 pm Staff Updates (5 Minutes)
 - Hackberry Bridge, Northwest Corner of Warembourg
6. 7:00 pm Board updates (5 Minutes)
7. 7:05 Public Comments on Items Not on the Agenda (5 Minutes, more time as needed)
8. 7:10 pm Action Item: Acquisition Ranking. Presented By Susan McEachern,

Persons planning to attend the meeting who need sign language interpretation, translation services, assisted listening systems, Braille, taped material, or special transportation, should contact the City Clerk's Office at 303 335-4536 or MeredythM@LouisvilleCO.gov. A forty-eight-hour notice is requested.

Si requiere una copia en español de esta publicación o necesita un intérprete durante la reunión, por favor llame a la Ciudad al 303.335.4536 o 303.335.4574.

City of Louisville

*Open Space Division 749 Main Street Louisville CO 80027
303.335.4776 (phone) www.LouisvilleCO.gov*

OSAB Chair (15 Minutes)

9. 7:25 pm Action Item: Parks Recreation and Open Space Long Range Plan. Trail Connection and Safety Opportunities Work Session. Presented by Bryon Weber, PROST Project Manager (120 Minutes)
 - Part A: Preliminary Feedback on Draft Trails Goals and Strategies
 - Part B: Map Exercise
10. 9:25 pm Discussion Items for Next Meeting:
 - Open Space Budget
 - Assign Joint Board Meeting Dates
11. Adjourn

Open Space Advisory Board Meeting Minutes

**February 11, 2026
Library 1st Floor Meeting Room
951 Spruce Street
6:45 PM**

6:45 pm Call to Order- Roll Call-

Board Members Present: Brad Pugh, Andrew Dorsey, Daniel Rupp, Susan McEachern, Michiko Christiansen, Mark Poletti, Denise Montagu and Bud Talbot

Board Members Absent: none

Staff Members Present: Ember Brignull; Bryon Weber; Adam Blackmore; Ginger Cross

Approval of Agenda

- Motion: Denise
- Second: Mark
- Outcome: Approved

Approval of Minutes

- Motion: Denise
- Second: Mark
- Outcome: Approved

6:55 pm Staff Updates (5 Minutes)

- Ember referenced page 8 and 9 of the packet
- Staff is reviewing fire department conflagration plan; it shows huge positive impact from grazing. There is an upcoming open house about the plan.
- Susan noted she could not see Stargazers on the city calendar; Ember will investigate.

7:00 pm Board updates (5 Minutes)

- None

7:05 Public Comments on Items Not on the Agenda (5 Minutes, more time as needed)- Tamar Krantz noted she believes the city made a mistake not requiring public land dedication at Coal Creek Ranch. She would like OSAB to request the opportunity to review the development proposal.

7:10 pm Discussion Item: Parks Recreation and Open Space Long Range Plan. Trail-Focused Work Session. Presented by Keith Walzak, DTJ Design (45 Minutes)

Keith noted that tonight is a follow up to the Nov. 14 trails working group meeting. The project is into Phase III; consultants have been developing many

City of Louisville

*Open Space Division 749 Main Street Louisville CO 80027
303.335.4776 (phone) www.LouisvilleCO.gov*

parts of the plans behind the scenes and will be reporting some of that work soon in draft plans.

Keith reviewed issues with the current mix of trail standards used by different departments and some of the takeaways from the community surveys and previous workshops.

Susan and Bud noted that the takeaway “Social trails reveal missing connections” doesn’t accurately describe all the reasons that social trails exist and is misleading. Keith acknowledged that social trails exist for various reasons, but we do need to recognize that some do point out missing connections.

- **Part A: Confirm High, Med, Lower Trail Priorities-**

Keith – Reviewed the map of trail gaps. He noted for context that Highway 42 redevelopment will likely include a shared use path along the stretch through Louisville and Lafayette; funding would be part of that whole redevelopment project. There is also work underway to fund and develop an underpass under Highway 42 at South Street between downtown Louisville and the ball fields east of town.

OSAB members asked for several clarifications of the trails gap map in the presentation, including clearer labeling of streets and proposed corridors and perhaps producing individual maps of smaller segments of town. Keith noted that this map was just an interim tool, not meant for any final report.

Keith also presented a large map showing the trail gaps identified in the November 14 meeting. Early in the meeting Keith asked the OSAB to review the gaps and prioritize them, with the goal being that the prioritized map would be shown at the community open house on March 12. Several board members expressed frustration with the lack of notice about the exercise, which meant that they could not be prepared to offer informed decisions. Board members also expressed concerns about the limited time on the agenda for prioritizing so many potential gaps. Based on the discussion, Bryon and Adam proposed a different process where OSAB’s input would come during its 3/11 monthly meeting and would not shape the community process but would go to city council along with the community’s input. Bryon also suggested a process where OSAB would prioritize broad categories (e.g., underpasses, bike paths, etc) and then prioritize projects within the categories.

After extensive discussion, OSAB agreed that Keith and Bryon would create a process where members would be given a spreadsheet where they could individually rank categories of projects (e.g., underpasses, bike corridors, social trails) and then rank individual projects in those categories before the next meeting. Ember would then compile the rankings so that OSAB could discuss

the compiled ratings and produce a finalized recommendation, like the process used to develop the acquisition rankings.

To facilitate the ranking process, consultants would also produce individual maps showing projects in each category (e.g., one map for underpasses, another for bike paths, etc.). The new maps would more clearly show streets and key landmarks than are shown in the current map.

To make the timing of the ranking process work, OSAB members would need the maps and ranking by approximately February 18 to allow time for review, submission, and compiling the data before the next meeting.

- **Part B: Review Draft Guiding Principles, Open Space and Trails Goals and Action Items**

Not discussed as the previous discussion took the entire time on the agenda. Bryon also noted that he would work to integrate the draft goals and strategies part of the plan into the prioritization process that he will share with the board. He noted that the goals line up reasonably well with the buckets of trails priorities that Keith was presenting, so hopefully he can design a process where the board members can prioritize goals and then projects under the goals.

- **Part C: Discussion + Next Steps**

See notes above on next steps on prioritization.

Public Comment on the Trails Plan:

1. Helen Moshak: Helen noted that she submitted a detailed document that should be added to the public record. She summarized that document as follows: (1) Start with protecting and restoring natural resources; (2) Science first, then trails – ensure environmental assessment before decisions; (3) Build a transparent, repeatable process for mapping trails (including unauthorized trails) with other key ecological data; (4). Protect nature with setbacks from critical habitat.
2. Matt Jones: Was at the 11/14 working group meeting. Noted that takeaways that Keith listed were missing a key item: “Protect the Environment.” Argued that protecting the environment should be #1.
3. Tamar Krantz: Agreed with Matt and Helen re. the importance of environmental protection. Should consider closing some existing trails to protect wildlife; e.g., maybe close one side of Harper Lake.

7:55 pm Action Item: 2025 OSAB Accomplishments & Draft OSAB 2026 Work Plan. Presented by Susan McEachern, OSAB Chair (30 Minutes)

Andy moved to approve the document as written. Mark seconded. Approved unanimously.

8:25 pm Discussion Item: Comprehensive Plan Review and Recommendations. Presented by Susan McEachern, OSAB Chair (15 Minutes) [Comprehensive Plan](#)

Susan proposed drafting a letter to city council suggesting changes to the plan to better support open space. OSAB members agreed and offered several suggested points for the letter, including ensuring that the plan includes a goal of acquiring more open space and that the plan commits to honoring PROST.

Action: Susan will draft a letter and distribute to the board to review, then will revise the letter as necessary and give it to Ember and Adam to forward to council. Adam suggested that Susan also send the letter to Jeff Hirt.

Public Comments:

Tamar Krantz: Referenced Helen Moshak's detailed email to us about the comp plan. Wants us to insist that the map of priority properties be included in the plan, as in Olympia WA. If not the property map, include the map of conservation areas. Also, please ensure that the open space department is in the development code update.

Helen Moshak: Noted her earlier email submitted to OSAB on behalf of Louisville Open Space Advocates. She will update the email to reflect LOSA's support of OSAB recommendations and will send it to Council and to the planning department

Matt Jones: Comp Plan underemphasizes open space given the survey; we should push for the acquisition map. Should keep pushing to protect the hillside to the southeast of Davidson Mesa.

8:40 pm Discussion Item: Form OSAB Tiger Teams. Presented by Susan McEachern, OSAB Chair (10 Minutes)

Discussed potential teams, including social trails, trails system plan, education, and a Coal Creek collaboration team with Superior and Lafayette.

Tentatively established a social trails team with Andy and Brad and a trails system team with Bud and Daniel. (Note that Susan will follow up with Brad to see if he is willing to serve).

Mark will serve on a Coal Creek Working Group with one member each from the Lafayette and Superior open space boards.

8:50 pm Discussion Items for Next Meeting

Review trails priorities per the process outlined above in the agenda item on trails priorities. This will be an extensive discussion taking up the bulk of the meeting time.

Secretaries for upcoming meetings

March: Brad

April: Bud

May: Denise

June: Mark

July: Michiko

Adjourn 9:20

MEMORANDUM

To: Open Space Advisory Board
From: Open Space
Date: March 11, 2026
Re: Information Item 5: Staff Updates

General:

1. Staff has been assisting with the PROST Long Range Plan and Trails Master Plan as requested by the PROST project manager and leadership
2. Hiring:
 - The City of Louisville received 47 applicants for the Ranger Naturalist Position. Six candidates have been invited to first-round interviews in March.
 - Trails & Maintenance Seasonal jobs have been posted and staff is seeking two candidates.

Natural Resources:

1. The goat grazing contract has been renewed with plans to utilize grazing for noxious weed control. Proposed schedule is June 1-June 12 and July 5-July 17 on Davidson Mesa.
2. The cattle grazing contract has been renewed for a first year of a multi-year contract extension. Grazing will occur on Davidson Mesa, Damyanovich, and North Open Spaces
3. The Warembourg fishing pond has been refilled.
4. Staff has shared the mapping data to PROS consultant
5. Staff have been working on transitioning the NR supervisor's completed work and helping with handoff to staff

Maintenance & Trails:

1. Staff is in the process of completing trail repairs on the Coal Creek Trail and should have the area completed by next week. Staff will then move onto completing the trail corridor restoration portion of the task.
2. Staff has been assisting with the Lake-to-Lake portion of the Wayfinding Capital Improvement Project by ground truthing sign locations and supporting the contractors as needed.
3. Staff has been witnessing an influx of graffiti along the Open Space trail systems and time has been spent removing these unsolicited messages.

Resource Protection:

1. Sr. Ranger White-Patarino will attend the Rocky Mountain Ranger Association's annual member meeting on March 25, where he will conclude his second and last term as Association Chair.
2. Staff have observed unusually high numbers of fishing contacts for this time of year. The likely causes are Colorado Parks and Wildlife performing a second fish stocking in October and warm temperatures keeping Harper Lake unfrozen.

Education and Volunteers:

1. Eight new participants have signed up to participate in the Raptor Monitoring volunteer program.
2. Renewal information for the Adopt program has been sent out for participation this year.
3. Open Space will be offering volunteer opportunities for the public to participate in trash pick ups on select properties for Earth Day, April 22. Please contact Catherine at cmanian@louisvilleco.gov for more information and to sign up.
4. Staff will be meeting with the Keep It Clean Partnership to discuss collaboration opportunities.

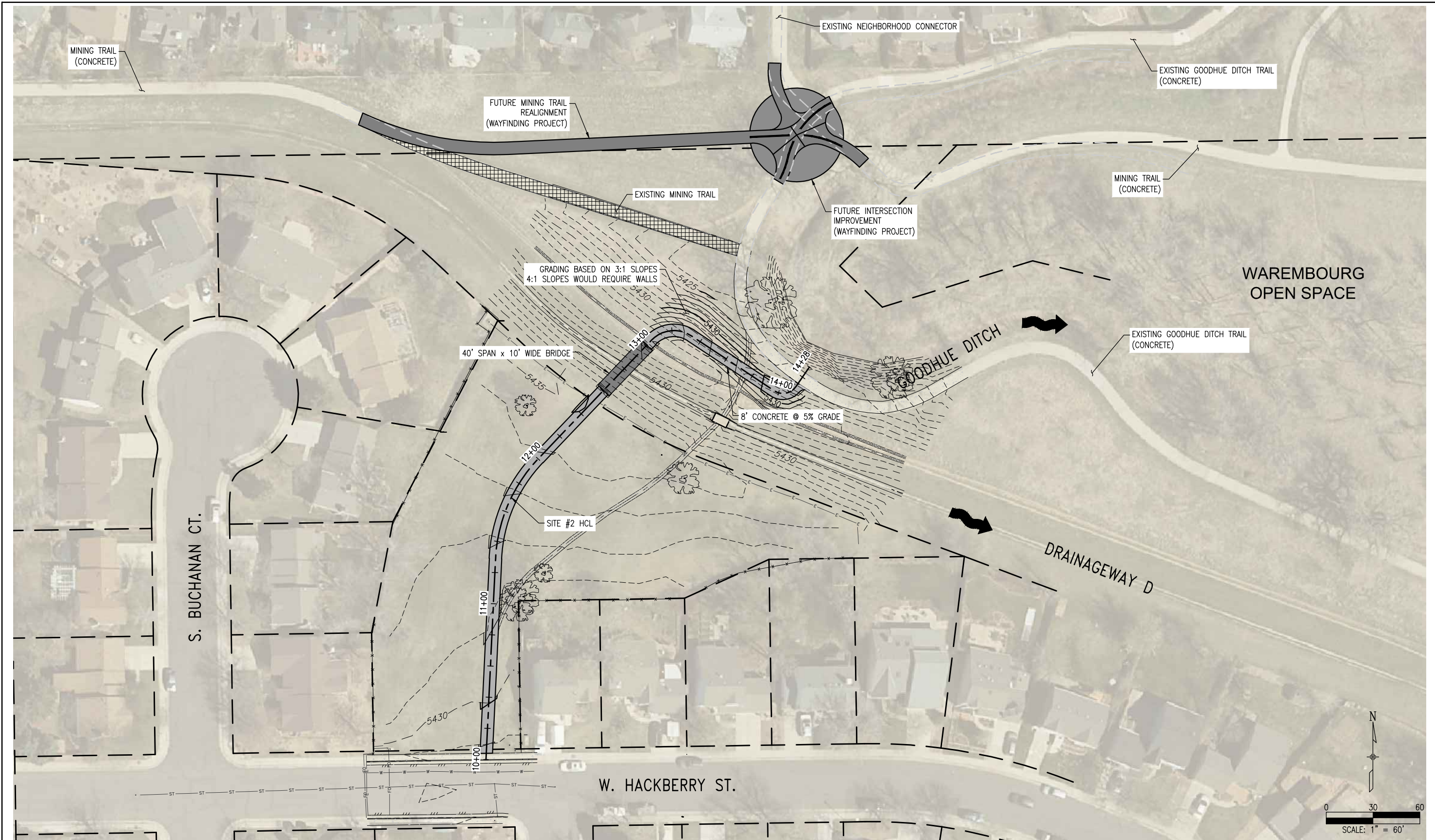
Education Events Upcoming:

1. Friday, March 13, 2026, from 1:00 PM to 2:00 PM, Friday Afternoon Club: How Smart is a Coyote? At the Louisville Library.

Education Events Past:

2. Sunday, February 15, 2026, from 6:00 PM to 8:00 PM, Open Space Stargazers: Stargazing is for Lovers at Aquarius Open Space. Fifteen participants.
3. Sunday, March 1, 2026, from 6:00 PM to 8:00 PM, Open Space Stargazers: Gas Giants and Winter Constellations at Aquarius Open Space. Twelve participants.
4. Tuesday, March 3, 2026, from 6:00 to 7:00 PM, Raptor Training at City Services. Not open to the public. Eight participants.
5. Friday, March 6, 2026, from 9:30 AM to 11:30 AM, Seed Slingers at Daughenbaugh Open Space. Participation not available at time of publication.

Staff Updates on Hackberry Bridge



C:\7.2 Clients\071 - Cl Louisville\018524 - 2017 New Trails\50 DWG\018524-(x) Site Plan-Hackberry Bridge B.dwg Feb 28, 2018 - 2:27pm

Print Date: Feb 28, 2018	
File Name: 018524-(x) Site Plan-Hackberry Bridge B.dwg	
Horiz. Scale: As Noted Vert. Scale: As Noted	
Unit Information Unit Leader Initials	

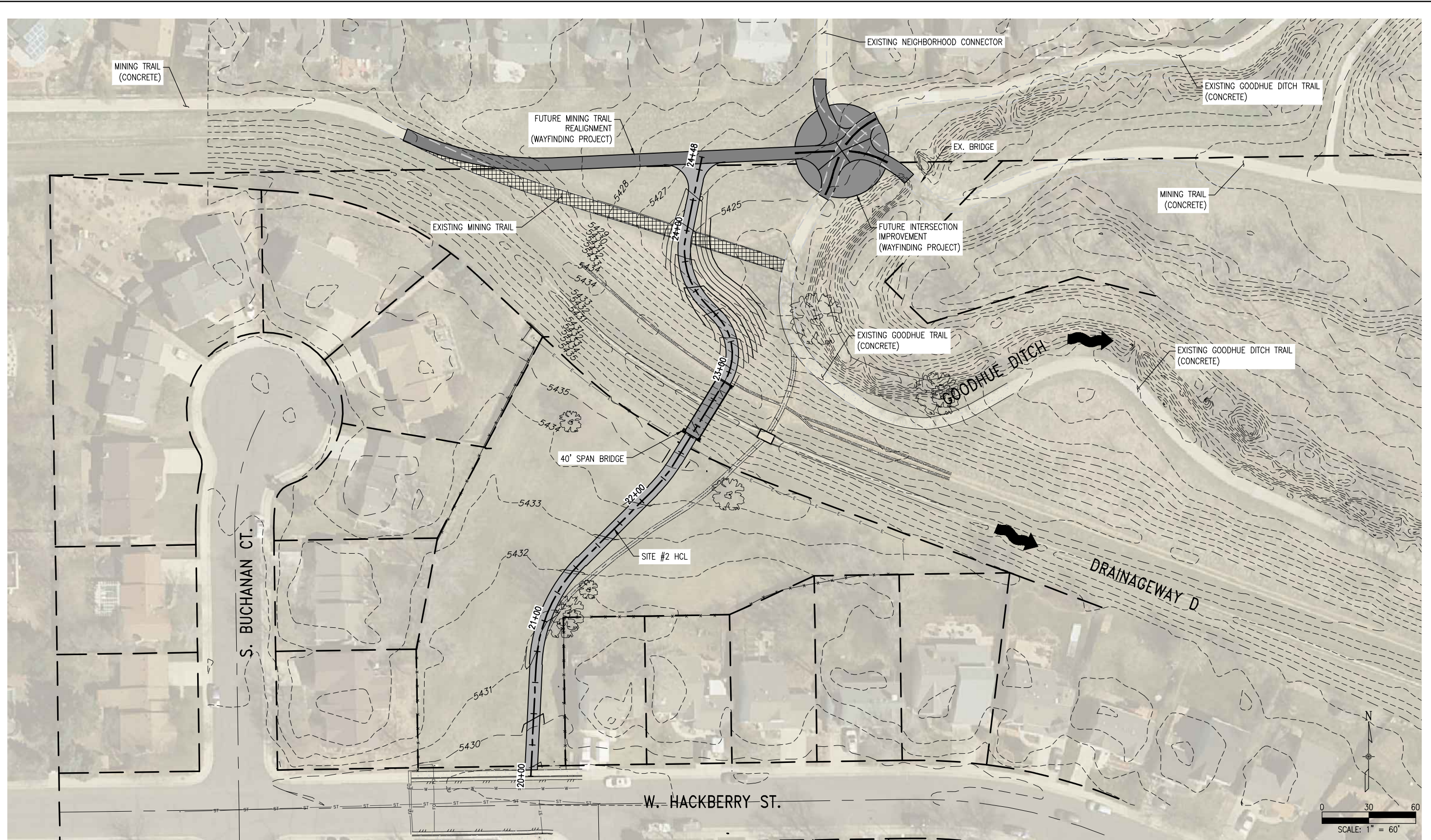
Sheet Revisions		
Date:	Comments	Init.

As Constructed
No Revisions:
Revised:
Void:

CITY OF LOUISVILLE 2017 NEW TRAILS			
OVERALL SITE PLAN			
SITE #2 - HACKBERRY ST. ALT B			
Designer:	SJB	Structure	
Detailer:	MAW	Numbers	
Sheet Subset:		Subset Sheets:	

Project No./Code	

Staff Updates on Hackberry Bridge



C:\7.2 Clients\071 - Cl Louisville\018524 - 2017 New Trails\50 DWG\018524-(x) Site Plan-alc.dwg Mar 01, 2018 - 1:14pm

Print Date: Mar 01, 2018	
File Name: 018524-(x) Site Plan-alc.dwg	
Horiz. Scale: As Noted	Vert. Scale: As Noted
Unit Information	Unit Leader Initials

Sheet Revisions		
Date:	Comments	Init.

Loris
A DIVISION OF OTAK

City of Louisville
COLORADO • SINCE 1878

As Constructed
No Revisions:
Revised:
Void:

CITY OF LOUISVILLE 2017 NEW TRAILS OVERALL SITE PLAN SITE #2 - HACKBERRY ST. ALT C			
Designer:	SJB	Structure Numbers	
Detailer:		Subset Sheets:	
Sheet Subset:			

Project No./Code	












Discussion Item 8: Acquisition Ranking

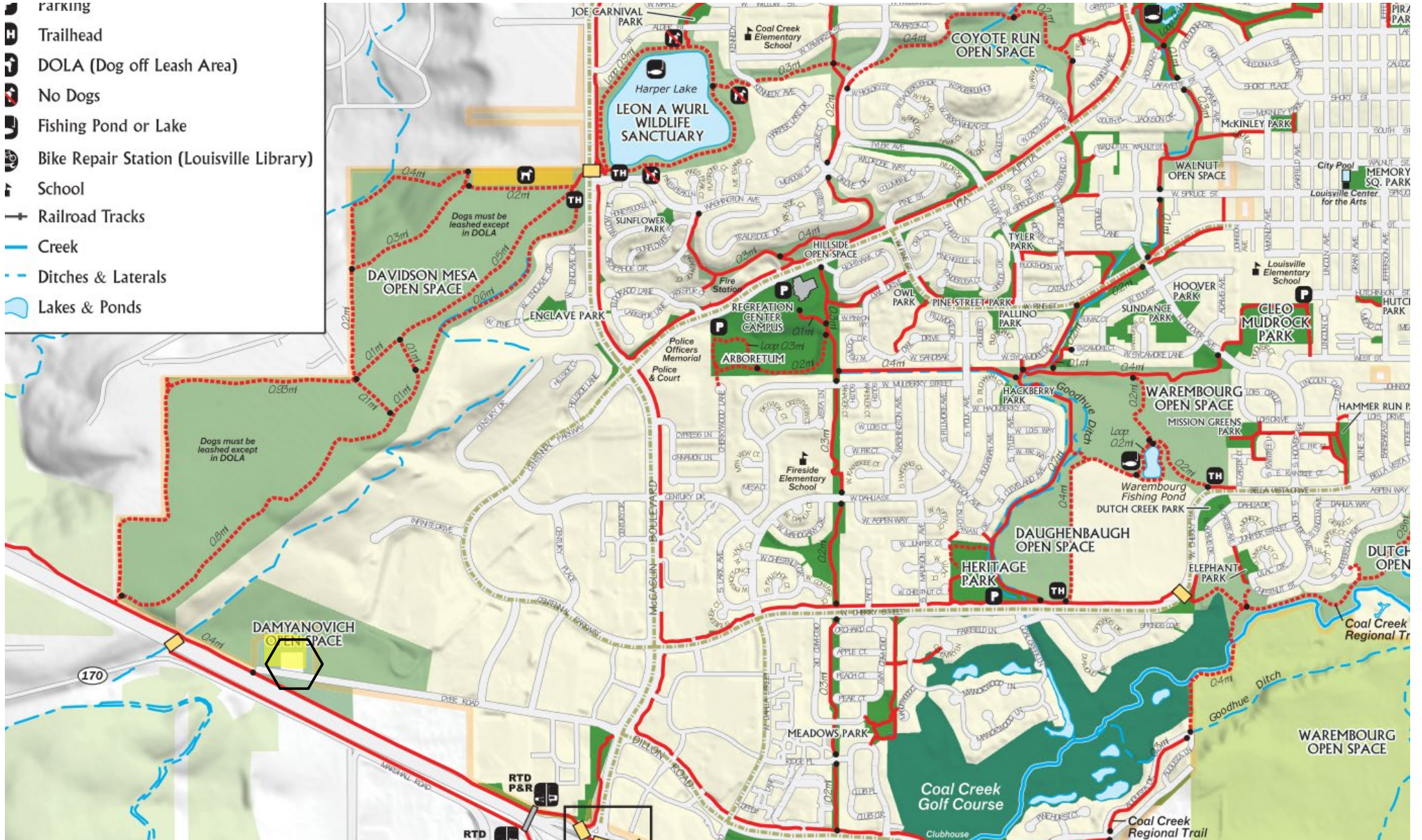
Name: _____



Address: 7507 Dyer Road (Green parcel)

Parcel	Size (acres)	Natural Resource Value (1-10)	User Experience Value (1-10)	Strategic Value (1-10)	Totals	Notes/comments/observations
Damyanovich	1.22					Surrounded by Damyanovich Open Space

-  Parking
-  Trailhead
-  DOLA (Dog off Leash Area)
-  No Dogs
-  Fishing Pond or Lake
-  Bike Repair Station (Louisville Library)
-  School
-  Railroad Tracks
-  Creek
-  Ditches & Laterals
-  Lakes & Ponds



Ranking Criteria

Each board member will rate a parcel from 0-10 on three different scales. These ratings will be combined by staff (average) for each property.

- Natural Resource Value (quality of vegetation, presence of wetlands/riparian areas/open water, wildlife habitat, habitat connectivity, topological/geologic significance, size)
- Visitor Experience Value (public visibility, scenery, views, historical/cultural significance, passive recreation potential, trail potential/connectivity).
- Strategic Value (agricultural preservation, city/county buffers, significance to the City's trail network, potential for partners, threat of development, relevance to Comprehensive Plan/Transportation Master Plan)

Category Definitions

- a. Vegetation – The abundance / diversity of native plant species.
- b. Wetlands – Areas that are inundated or saturated by surface or ground water at a frequency and duration sufficient to support a prevalence of vegetation.
- c. Riparian Areas – Riparian vegetation and land adjacent to natural flowing water.
- d. Wildlife Habitat – Area that provides sustainable shelter, food, or protection for indigenous wildlife.
- e. Connectivity – A piece of land that contributes to an overall open space and or community recreational network.
- f. Open Water – A standing body of water present year round or seasonal that is important to the sustenance of vegetation, wildlife, or recreational opportunities.
- g. Topographic / Geological Significance – Features that act as visual markers, aesthetic formations, geological uniqueness, or vantage points deemed of public value.
- h. Size – Small, medium or large.
- i. Public Visibility – The degree in which a prospective open space parcel can be viewed from public roads or facilities.
- j. Scenic – An area that provides for natural visual enjoyment to an observer while not on the property.
- k. Views – An area that provides for natural visual enjoyment to an observer while on the property.
- l. Historical Significance – Contains physical reminders, archeological sites, or historical structures, or there is knowledge of significant past use that is of public value.
- m. Agricultural Preservation – Value in maintaining the active use of farming or ranching and/or preserving the history of prior agricultural use.

- n. Recreation Potential – Feasibility and quality of appropriate recreational use.
- o. Existing Condition – How close the current state of the property is to the desired state.
- p. Threat of Development – Possibility or probability of new development in the near term.
- q. Buffers – Natural divisions providing a discernable break between or within communities.
- r. Potential for Partners – The likelihood that other entities would share the financial burden of acquisition and/ or management of the property.
- s. Undefined Unique Quality – Value not captured in other category
- t. Comp. Plan – The comp plan designation for this property is as open space.



JOIN ^{the} **JOURNEY!**
GUIDING THE FUTURE
 of Louisville Parks, Open Spaces, Trails,
 Recreation & Senior Center, and Golf Course

PROS GUIDEBOOK
OSAB / Trails Subcommittee Meeting

February 11, 2026

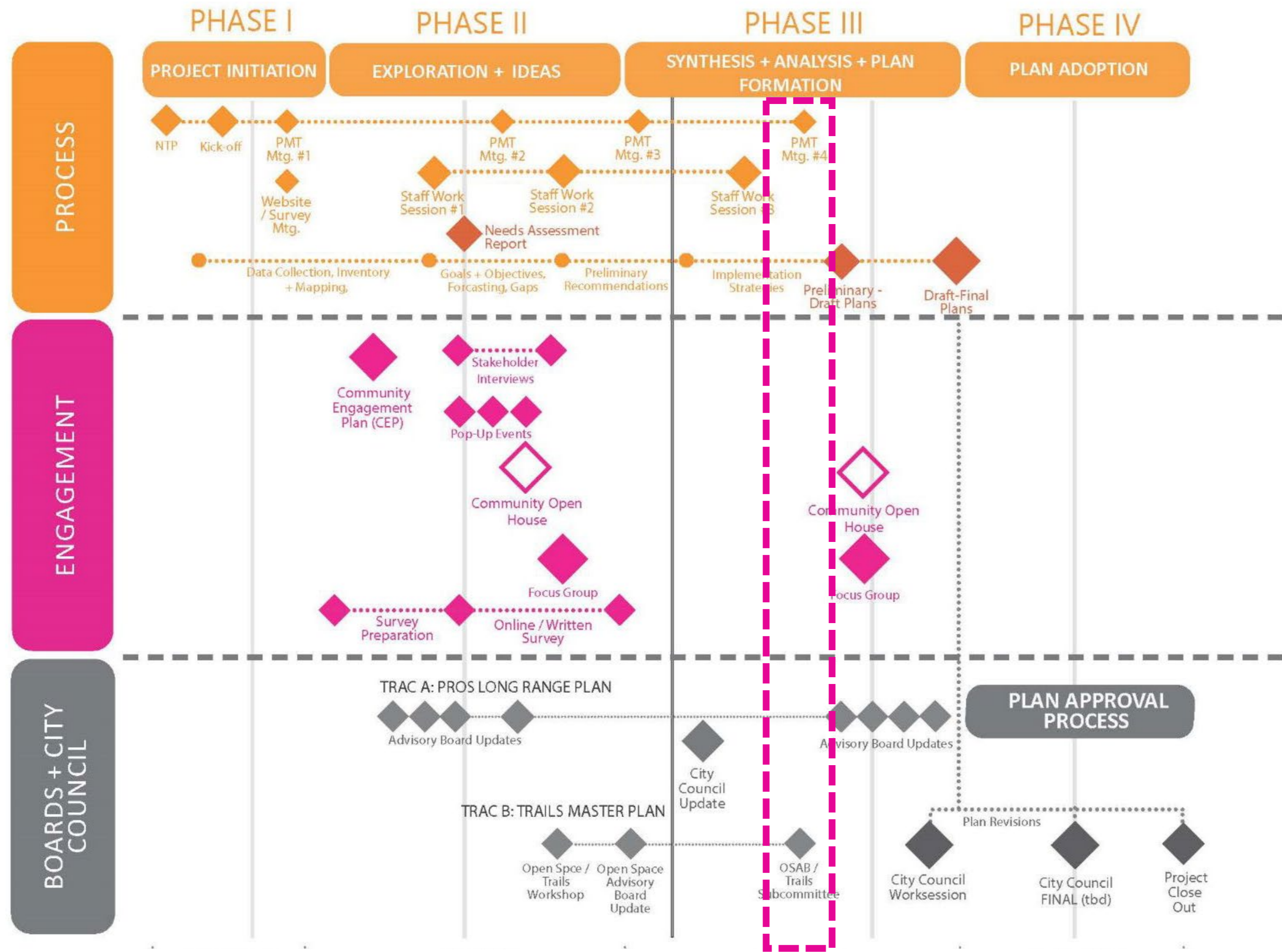
Workshop Agenda



JOIN ^{the} **JOURNEY!**
GUIDING THE FUTURE
of Louisville Parks, Open Spaces, Trails,
Recreation & Senior Center, and Golf Course

Confirm High, Med, Low Trail Priorities
Review Guiding Principles + Plan Goals
Discussion + Next Steps





PROJECT SCHEDULE

Purpose

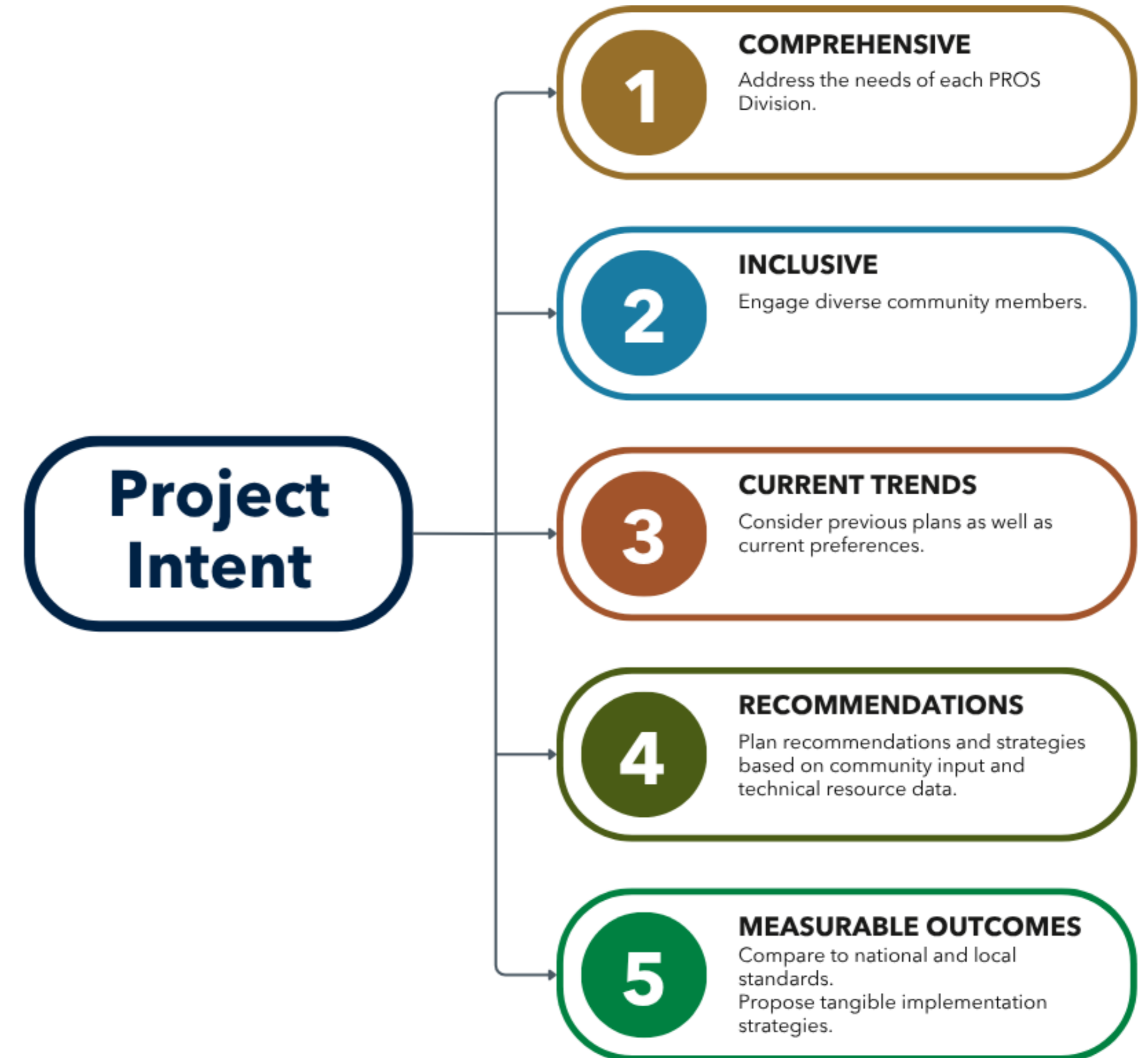
Establish a roadmap for Trails System Plan Priorities



- Confirm gaps in the trails system
- Provide descriptions for future improvements
Specifically, what is needed?
- Prioritize improvement projects based on:
Preferences and Need
Safety

Further evaluations of recommended projects will be conducted based on:

- Funding availability
- Staff capacity
- Other department priorities



Trails System Plan



- **Address Recreational and Shared Pathway System**

- Connect Origins and Destinations
- Eliminating Barriers
- Wayfinding and Signage

- **Open Space Land Classification System**

- Land Management Practices

- **Decision-Making Framework**

- Capital Improvement Programming
- Maintenance and Operations

Trail Design Standards

- National Recreation and Park Association (NRPA)
- AASHTO Standards
 - American Association of State Highway and Transportation Officials
- MUTCD Standards
 - Manual on Uniform Traffic Control Devices
- Boulder County Trails Standards
- USFS Recreation Trails Standards

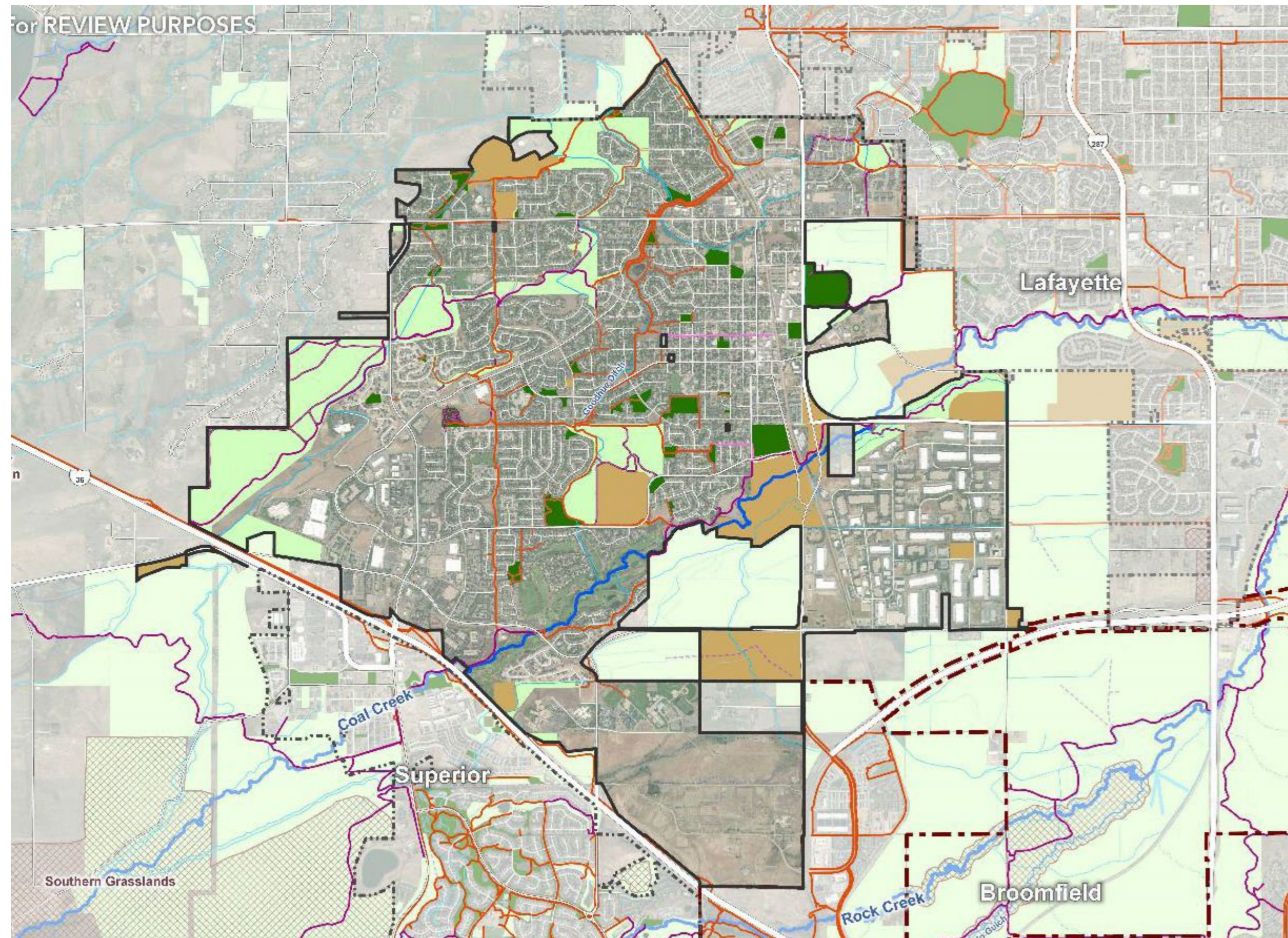


Takeaways to Date

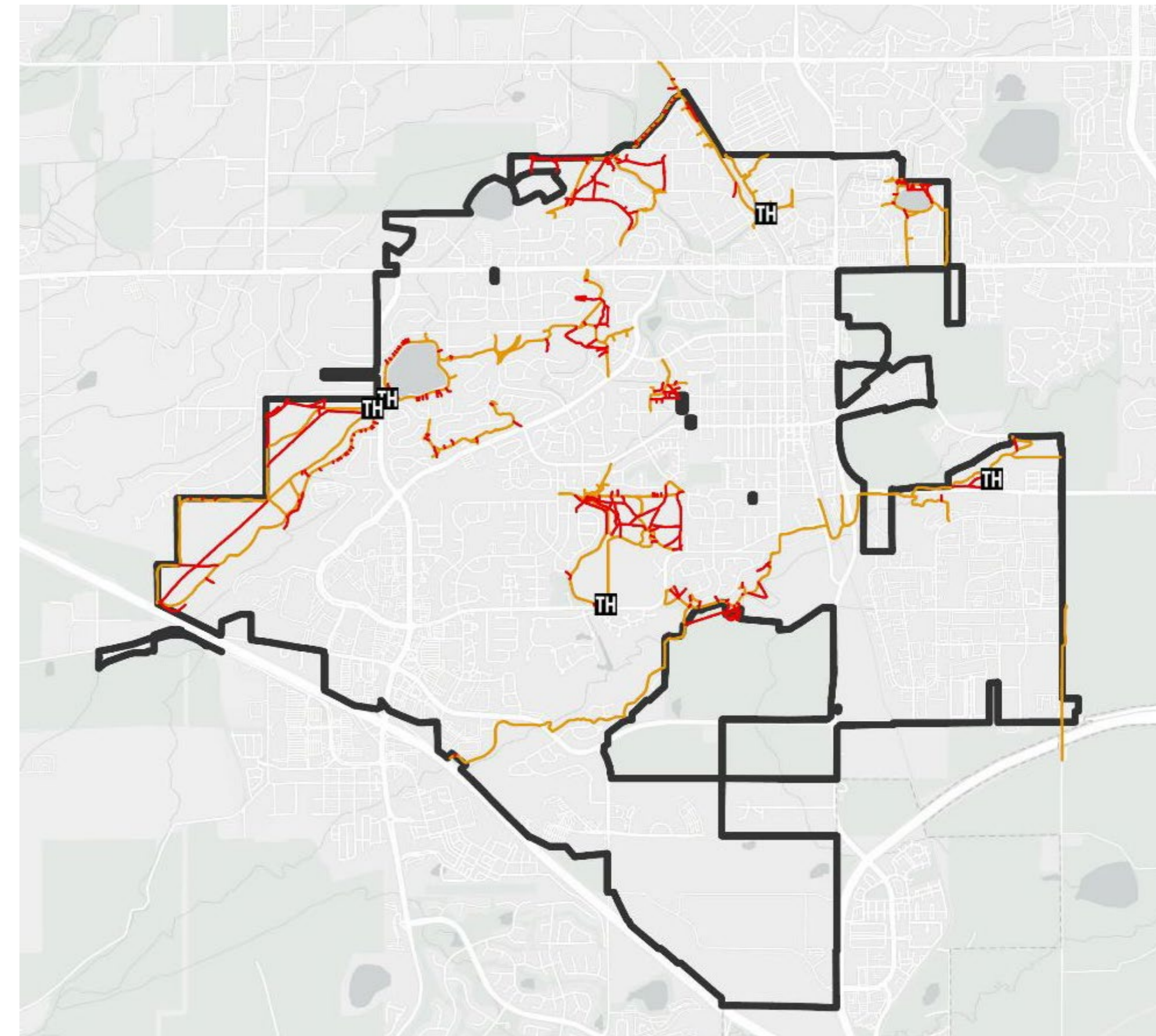
- Trails are the city's most used asset
- Residents want better regional links
- Safety and crossings are top concerns
- Social trails reveal missing connections



JOIN the **JOURNEY!**
GUIDING THE FUTURE
of Louisville Parks, Open Spaces, Trails,
Recreation & Senior Center, and Golf Course



Existing Open Space and Trails System



2014 Social Trails Inventory (Source: City of Louisville)

Big Ideas

Input from Nov 14 Workshop

Connectivity + Wayfinding

- Create safe, clear connections between neighborhoods, downtown, and regional trails.
- Address barriers like railroad crossings, South Boulder Road, and steep grades.
- Improve wayfinding with maps, signage, and consistent trail standards to help trail users.

Policy + Standards for Trails

- Develop a policy for social/ unauthorized trails: decide which to close, restore, or integrate.
- Adopt appropriate trail standards for Louisville's recreational trails.
- Include enforcement and education to support compliance and stewardship.

Habitat + Ecosystem Protection

- Prioritize eco-diverse areas and sensitive habitats in planning.
- Implement buffers and restoration strategies to minimize fragmentation.
- Balance recreation with conservation through science-based land assessments and monitoring.



JOIN ^{the} **JOURNEY!**
GUIDING THE FUTURE
of Louisville Parks, Open Spaces, Trails,
Recreation & Senior Center, and Golf Course

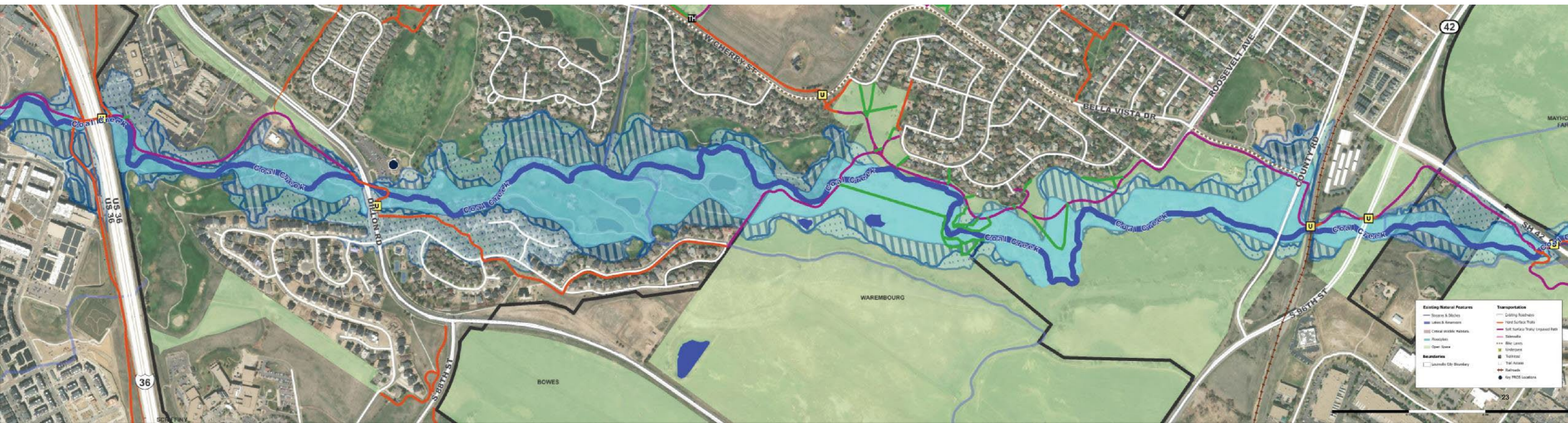


Trails System Program Priorities



JOIN the JOURNEY!
GUIDING THE FUTURE
of Louisville Parks, Open Spaces, Trails,
Recreation & Senior Center, and Golf Course

- Promote a balanced ecosystem of open lands and recreational trail uses
- Implement high priority and cost-effective trail access improvements
- Review trail regulations and enforcement practices
- Create consistent trail design standards
- Update data management and open lands classifications
- Develop educational and awareness campaigns



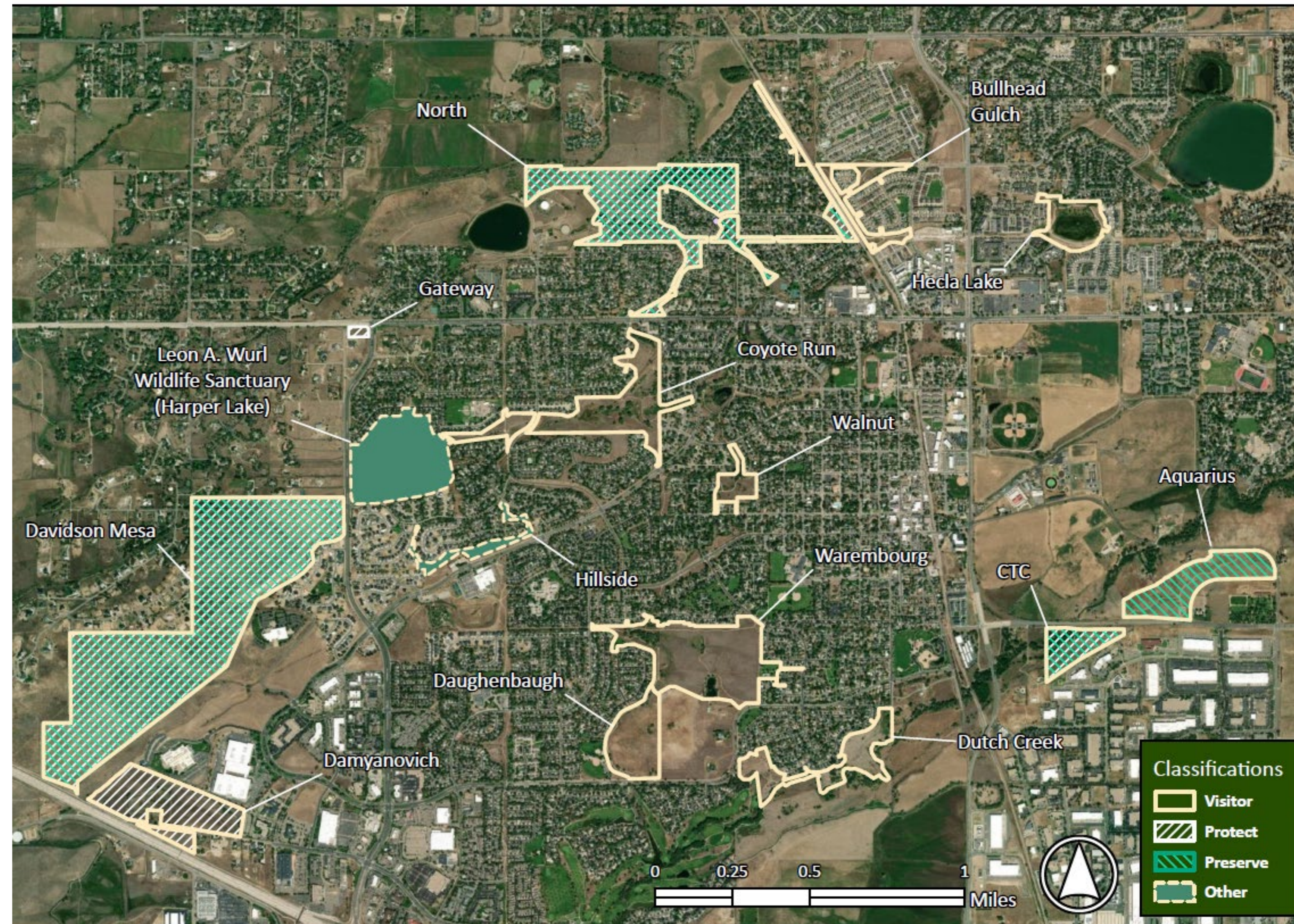
Other Messaging Points

Input from various sources

- Promote inclusivity and equitable access
- Ensure safe routes to schools
- Develop an interconnected trail system
- Identify additional funds for trail improvements
- Promote recreational value - Louisville as a regional trail's destination
- Update habitat and land management plans
- Acquire more open space



JOIN the JOURNEY!
GUIDING THE FUTURE
of Louisville Parks, Open Spaces, Trails,
Recreation & Senior Center, and Golf Course



Open Space Classifications in Louisville, CO

Trail Gaps

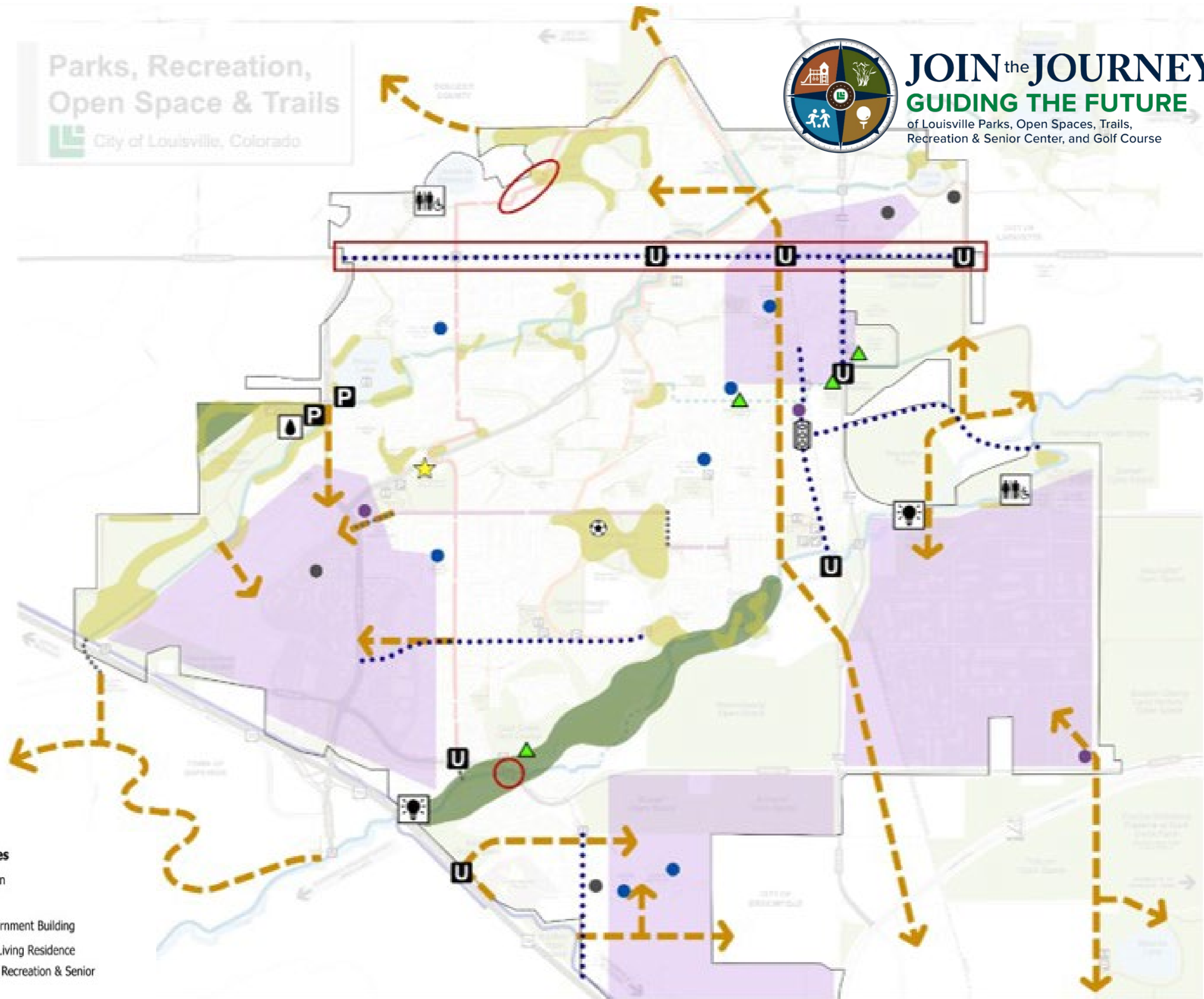
Map identifies findings from the Nov 14th workshop

Request:

Confirm key gaps and/or safety concerns in the current trail system.

Be as specific as you can

What are the concerns and needs?



Guiding Principles (draft)



Department-wide core values

Provide direction to both the PROS Long-Range Plan and Trails System Plan

NORTH

Nurture Existing Assets

- Maintain and invest in existing assets to ensure their continued success and quality, while thoughtfully planning new opportunities that reflect evolving community interests, needs, and priorities.

Optimize Connections Between People and Places

- Strengthen the connections that link people, places, and experiences to further provide safe, easy, and equitable access to amenities, programs, and services.

Reinforce Commitment to Health and Wellness

- Foster inclusive programs, spaces, and engagement opportunities that support a sense of belonging and promote physical, mental, and social well-being for people of all ages, interests, and abilities.

Tailor Systems for Sustainability and Resilience

- Shape plans and practices to steward the community's ecological, financial, and social interests and strengthen the long-term resilience of both natural and built environments.

Honor Community Resources

- Provide high-quality services and community benefits through fiscal responsibility, operational efficiency, proactive leadership, and informed decision-making.

Draft Goals



JOIN^{the} JOURNEY!
GUIDING THE FUTURE
of Louisville Parks, Open Spaces, Trails,
Recreation & Senior Center, and Golf Course

- Goal 1** **Improve trail connectivity**
- Goal 2** **Establish trail design standards to guide trail implementation**
- Goal 3** **Improve user safety**
- Goal 4** **Protect and restore natural resources**
- Goal 5** **Address undesignated social trails**
- Goal 6** **Strengthen management, funding, and partnerships**



Draft Plan Strategies



Goal 1: Improve trail connectivity

Strategies

- T 1.1:** Prioritize missing trail connections to improve access between neighborhoods, PROS facilities, schools, commercial areas, and regional trail corridors
- T 1.2:** Identify maintenance, rehabilitation, and safety upgrades
- T 1.3:** Carry out the trail and multimodal mobility improvements identified in the 2019 Transportation Master Plan
- T 1.4:** Pursue a trail network that improves local connectivity and supports regional connections through coordinated planning and partnerships
- T 1.5:** Maintain accurate mapping and inventory of existing and planned trail corridors, and use this information to inform system improvements
- T 1.6:** Continue to utilize, monitor, and expand trail counters at strategic locations and leverage available technology to collect trail use data
- T 1.7:** Promote use of the trail system to support recreation, health and wellness, and alternative transportation options

Draft Plan Strategies



Goal 2: Establish trail design standards to guide trail implementation

Strategies

T 2.1: Develop formalized guidelines defining trail types, accessibility, maintenance needs, and amenities.

T 2.2: Apply adopted trail design and maintenance standards consistently across the system.

T.2.3: Ensure trail infrastructure is planned, designed, and managed in a predictable and equitable manner.

T 2.4: Apply appropriate regional and national standards (such as USFS, MUTCD, AASHTO, etc.).

T 2.5: Apply sustainable trail design techniques—such as contour alignment and context-appropriate materials

T.2.6: Reduce environmental impacts, improve durability, and minimize long-term maintenance needs.

Draft Plan Strategies



Goal 3: Improve user safety

Strategies

- T 3.1:** Monitor trail conditions and identify safety and deferred maintenance needs
- T 3.2:** Track crash data, criminal activity and flooding incidents
- T 3.3:** Reduce conflicts between different user groups through signage, trail markings, education, and trail design.
- T 3.4:** Coordinate with Public Works to implement shared use pathway improvements
- T 3.5:** Expand community education and outreach efforts related to trail safety
- T 3.6:** Implement the wayfinding and signage program
- T 3.7:** Explore technology to improve user safety and minimize unintended safety and environmental impacts
- T 3.8:** Improve trail visibility (sightlines, lighting needs, vegetation, and other physical conditions)

Draft Plan Strategies



Goal 4: Protect and restore natural resources

Strategies

T 4.1: Align trail design, construction and maintenance decisions with Open Space Division goals and policies

T 4.2: Apply current Open Space land classifications and best practices to guide trail development

T.4.3: Address undesignated social trails that may impact habitat areas

T.4.4: Establish appropriate buffers or setbacks to minimize natural resource impacts

T 4.5: Evaluate municipal code provisions to clarify off-trail use on Open Space properties

T 4.6: Implement seasonal closures during sensitive breeding or migration periods in accordance with federal/state law

Draft Plan Strategies



Goal 5: Address undesignated social trails

Strategies

T 5.1: Adopt a City Council approved framework that establishes criteria regarding the management of undesignated trails

T 5.2: Ensure undesignated trails evaluations apply ecological data, land classifications, and habitat protection strategies

T 5.3: Determine whether trails should be improved, closed, or restored

T 5.4: Update the social trail data based and prioritize trail improvements as part of the Capital Improvement Program

T 5.5: Communicate program decisions through public outreach campaigns, signage, and mapping

Draft Plan Strategies



Goal 6: Strengthen management, funding, and partnerships

Strategies

- T 6.1:** Foster collaboration with internal City departments to support coordinated trail planning, delivery, and maintenance
- T 6.2:** Build upon external partnerships with surrounding counties, advocacy organizations, and potential funding partners
- T 6.3:** Evaluate ongoing staffing capacity needs to implement trail program, operations, and capital projects
- T 6.4:** Utilize department resources for communication and administrative support to ensure program implementation
- T 6.5:** Clarify roles and responsibilities for building and maintaining shared-use path and recreational trails throughout the city

Next Steps

- Revised - Draft Plan Strategies + Priorities
- Draft PROS Long Range Plan + Trails System Plan

Feb-March
March-April

Upcoming Dates

- Advisory Board Updates (PPLAB, YAB, RAB, OSAB)
- Community Open House
- OSAB Mtg.
- City Council Update
- Focus Group (Recreational)

March 4-23
March 12
April 8
April 14
TBD



JOIN^{the} JOURNEY!
GUIDING THE FUTURE
of Louisville Parks, Open Spaces, Trails,
Recreation & Senior Center, and Golf Course



Thank you!



JOIN ^{the} **JOURNEY!**

GUIDING THE FUTURE

of Louisville Parks, Recreation, Senior Services,
Golf, Open Space & Trails

Trail Opportunity Prioritization

Instructions: Based on the three provided maps, use check boxes to select your top choices for each category (selections are in no particular order). Individual preferences will be added to the larger table and automatically ranked prior to discussion/voting on overall board choices.

Regional Connections (select your top 2)											Board	
ID	Michiko	Andy	Susan	Denise	Mark	Brad	Daniel	Bud	Total	Auto-Rank	Choices	
SELECT 2 OF 7	1	<input type="checkbox"/>	<input type="checkbox"/>	<input type="checkbox"/>	<input type="checkbox"/>	<input type="checkbox"/>	<input type="checkbox"/>	<input type="checkbox"/>	<input type="checkbox"/>	0	1	<input type="checkbox"/>
	2	<input type="checkbox"/>	<input type="checkbox"/>	<input type="checkbox"/>	<input type="checkbox"/>	<input type="checkbox"/>	<input type="checkbox"/>	<input type="checkbox"/>	<input type="checkbox"/>	0	1	<input type="checkbox"/>
	3	<input type="checkbox"/>	<input type="checkbox"/>	<input type="checkbox"/>	<input type="checkbox"/>	<input type="checkbox"/>	<input type="checkbox"/>	<input type="checkbox"/>	<input type="checkbox"/>	0	1	<input type="checkbox"/>
	4	<input type="checkbox"/>	<input type="checkbox"/>	<input type="checkbox"/>	<input type="checkbox"/>	<input type="checkbox"/>	<input type="checkbox"/>	<input type="checkbox"/>	<input type="checkbox"/>	0	1	<input type="checkbox"/>
	5	<input type="checkbox"/>	<input type="checkbox"/>	<input type="checkbox"/>	<input type="checkbox"/>	<input type="checkbox"/>	<input type="checkbox"/>	<input type="checkbox"/>	<input type="checkbox"/>	0	1	<input type="checkbox"/>
	6	<input type="checkbox"/>	<input type="checkbox"/>	<input type="checkbox"/>	<input type="checkbox"/>	<input type="checkbox"/>	<input type="checkbox"/>	<input type="checkbox"/>	<input type="checkbox"/>	0	1	<input type="checkbox"/>
	7	<input type="checkbox"/>	<input type="checkbox"/>	<input type="checkbox"/>	<input type="checkbox"/>	<input type="checkbox"/>	<input type="checkbox"/>	<input type="checkbox"/>	<input type="checkbox"/>	0	1	<input type="checkbox"/>

Underpass/Overpass (select your top 3)											Board	
ID	Michiko	Andy	Susan	Denise	Mark	Brad	Daniel	Bud	Total	Auto-Rank	Choices	
SELECT 3 OF 13	1	<input type="checkbox"/>	<input type="checkbox"/>	<input type="checkbox"/>	<input type="checkbox"/>	<input type="checkbox"/>	<input type="checkbox"/>	<input type="checkbox"/>	<input type="checkbox"/>	0	1	<input type="checkbox"/>
	2	<input type="checkbox"/>	<input type="checkbox"/>	<input type="checkbox"/>	<input type="checkbox"/>	<input type="checkbox"/>	<input type="checkbox"/>	<input type="checkbox"/>	<input type="checkbox"/>	0	1	<input type="checkbox"/>
	3	<input type="checkbox"/>	<input type="checkbox"/>	<input type="checkbox"/>	<input type="checkbox"/>	<input type="checkbox"/>	<input type="checkbox"/>	<input type="checkbox"/>	<input type="checkbox"/>	0	1	<input type="checkbox"/>
	4	<input type="checkbox"/>	<input type="checkbox"/>	<input type="checkbox"/>	<input type="checkbox"/>	<input type="checkbox"/>	<input type="checkbox"/>	<input type="checkbox"/>	<input type="checkbox"/>	0	1	<input type="checkbox"/>
	5	<input type="checkbox"/>	<input type="checkbox"/>	<input type="checkbox"/>	<input type="checkbox"/>	<input type="checkbox"/>	<input type="checkbox"/>	<input type="checkbox"/>	<input type="checkbox"/>	0	1	<input type="checkbox"/>
	6	<input type="checkbox"/>	<input type="checkbox"/>	<input type="checkbox"/>	<input type="checkbox"/>	<input type="checkbox"/>	<input type="checkbox"/>	<input type="checkbox"/>	<input type="checkbox"/>	0	1	<input type="checkbox"/>
	7	<input type="checkbox"/>	<input type="checkbox"/>	<input type="checkbox"/>	<input type="checkbox"/>	<input type="checkbox"/>	<input type="checkbox"/>	<input type="checkbox"/>	<input type="checkbox"/>	0	1	<input type="checkbox"/>
	8	<input type="checkbox"/>	<input type="checkbox"/>	<input type="checkbox"/>	<input type="checkbox"/>	<input type="checkbox"/>	<input type="checkbox"/>	<input type="checkbox"/>	<input type="checkbox"/>	0	1	<input type="checkbox"/>
	9	<input type="checkbox"/>	<input type="checkbox"/>	<input type="checkbox"/>	<input type="checkbox"/>	<input type="checkbox"/>	<input type="checkbox"/>	<input type="checkbox"/>	<input type="checkbox"/>	0	1	<input type="checkbox"/>
	10	<input type="checkbox"/>	<input type="checkbox"/>	<input type="checkbox"/>	<input type="checkbox"/>	<input type="checkbox"/>	<input type="checkbox"/>	<input type="checkbox"/>	<input type="checkbox"/>	0	1	<input type="checkbox"/>
	11	<input type="checkbox"/>	<input type="checkbox"/>	<input type="checkbox"/>	<input type="checkbox"/>	<input type="checkbox"/>	<input type="checkbox"/>	<input type="checkbox"/>	<input type="checkbox"/>	0	1	<input type="checkbox"/>
	12	<input type="checkbox"/>	<input type="checkbox"/>	<input type="checkbox"/>	<input type="checkbox"/>	<input type="checkbox"/>	<input type="checkbox"/>	<input type="checkbox"/>	<input type="checkbox"/>	0	1	<input type="checkbox"/>
	13	<input type="checkbox"/>	<input type="checkbox"/>	<input type="checkbox"/>	<input type="checkbox"/>	<input type="checkbox"/>	<input type="checkbox"/>	<input type="checkbox"/>	<input type="checkbox"/>	0	1	<input type="checkbox"/>

Neighborhood Connections (select your top 5)											Board	
ID	Michiko	Andy	Susan	Denise	Mark	Brad	Daniel	Bud	Total	Auto-Rank	Choices	
SELECT 5 OF 19	LC-1	<input type="checkbox"/>	<input type="checkbox"/>	<input type="checkbox"/>	<input type="checkbox"/>	<input type="checkbox"/>	<input type="checkbox"/>	<input type="checkbox"/>	<input type="checkbox"/>	0	1	<input type="checkbox"/>
	LC-2	<input type="checkbox"/>	<input type="checkbox"/>	<input type="checkbox"/>	<input type="checkbox"/>	<input type="checkbox"/>	<input type="checkbox"/>	<input type="checkbox"/>	<input type="checkbox"/>	0	1	<input type="checkbox"/>
	LC-3	<input type="checkbox"/>	<input type="checkbox"/>	<input type="checkbox"/>	<input type="checkbox"/>	<input type="checkbox"/>	<input type="checkbox"/>	<input type="checkbox"/>	<input type="checkbox"/>	0	1	<input type="checkbox"/>
	LC-4	<input type="checkbox"/>	<input type="checkbox"/>	<input type="checkbox"/>	<input type="checkbox"/>	<input type="checkbox"/>	<input type="checkbox"/>	<input type="checkbox"/>	<input type="checkbox"/>	0	1	<input type="checkbox"/>
	LC-5	<input type="checkbox"/>	<input type="checkbox"/>	<input type="checkbox"/>	<input type="checkbox"/>	<input type="checkbox"/>	<input type="checkbox"/>	<input type="checkbox"/>	<input type="checkbox"/>	0	1	<input type="checkbox"/>
	LC-6	<input type="checkbox"/>	<input type="checkbox"/>	<input type="checkbox"/>	<input type="checkbox"/>	<input type="checkbox"/>	<input type="checkbox"/>	<input type="checkbox"/>	<input type="checkbox"/>	0	1	<input type="checkbox"/>
	LC-7	<input type="checkbox"/>	<input type="checkbox"/>	<input type="checkbox"/>	<input type="checkbox"/>	<input type="checkbox"/>	<input type="checkbox"/>	<input type="checkbox"/>	<input type="checkbox"/>	0	1	<input type="checkbox"/>
	LC-8	<input type="checkbox"/>	<input type="checkbox"/>	<input type="checkbox"/>	<input type="checkbox"/>	<input type="checkbox"/>	<input type="checkbox"/>	<input type="checkbox"/>	<input type="checkbox"/>	0	1	<input type="checkbox"/>
	LC-9	<input type="checkbox"/>	<input type="checkbox"/>	<input type="checkbox"/>	<input type="checkbox"/>	<input type="checkbox"/>	<input type="checkbox"/>	<input type="checkbox"/>	<input type="checkbox"/>	0	1	<input type="checkbox"/>
	LC-10	<input type="checkbox"/>	<input type="checkbox"/>	<input type="checkbox"/>	<input type="checkbox"/>	<input type="checkbox"/>	<input type="checkbox"/>	<input type="checkbox"/>	<input type="checkbox"/>	0	1	<input type="checkbox"/>
	LC-11	<input type="checkbox"/>	<input type="checkbox"/>	<input type="checkbox"/>	<input type="checkbox"/>	<input type="checkbox"/>	<input type="checkbox"/>	<input type="checkbox"/>	<input type="checkbox"/>	0	1	<input type="checkbox"/>
	LC-12	<input type="checkbox"/>	<input type="checkbox"/>	<input type="checkbox"/>	<input type="checkbox"/>	<input type="checkbox"/>	<input type="checkbox"/>	<input type="checkbox"/>	<input type="checkbox"/>	0	1	<input type="checkbox"/>
	LC-13	<input type="checkbox"/>	<input type="checkbox"/>	<input type="checkbox"/>	<input type="checkbox"/>	<input type="checkbox"/>	<input type="checkbox"/>	<input type="checkbox"/>	<input type="checkbox"/>	0	1	<input type="checkbox"/>
	LC-14	<input type="checkbox"/>	<input type="checkbox"/>	<input type="checkbox"/>	<input type="checkbox"/>	<input type="checkbox"/>	<input type="checkbox"/>	<input type="checkbox"/>	<input type="checkbox"/>	0	1	<input type="checkbox"/>
	LC-15	<input type="checkbox"/>	<input type="checkbox"/>	<input type="checkbox"/>	<input type="checkbox"/>	<input type="checkbox"/>	<input type="checkbox"/>	<input type="checkbox"/>	<input type="checkbox"/>	0	1	<input type="checkbox"/>
	LC-16	<input type="checkbox"/>	<input type="checkbox"/>	<input type="checkbox"/>	<input type="checkbox"/>	<input type="checkbox"/>	<input type="checkbox"/>	<input type="checkbox"/>	<input type="checkbox"/>	0	1	<input type="checkbox"/>
	LC-17	<input type="checkbox"/>	<input type="checkbox"/>	<input type="checkbox"/>	<input type="checkbox"/>	<input type="checkbox"/>	<input type="checkbox"/>	<input type="checkbox"/>	<input type="checkbox"/>	0	1	<input type="checkbox"/>
	LC-18	<input type="checkbox"/>	<input type="checkbox"/>	<input type="checkbox"/>	<input type="checkbox"/>	<input type="checkbox"/>	<input type="checkbox"/>	<input type="checkbox"/>	<input type="checkbox"/>	0	1	<input type="checkbox"/>
	LC-19	<input type="checkbox"/>	<input type="checkbox"/>	<input type="checkbox"/>	<input type="checkbox"/>	<input type="checkbox"/>	<input type="checkbox"/>	<input type="checkbox"/>	<input type="checkbox"/>	0	1	<input type="checkbox"/>

Trail Connectivity & Safety Opportunities*

March 11, 2026

*The following list of projects was developed through public input and field observations by the consultant team. The list of projects is to be reviewed. Input from the City Public Works Department is required prior to releasing to the public for input.

No.	Location	Existing Conditions	Need	Trail Type		Priority (Taskforce)	Priority (OSAB)	Priority (Staff)	Comment
				Recreational Trail	Multi-Use Shared Pathway				
Regional Trail Connectors (to outside Louisville)									
1	Continue Lake to Lake trail South under US36 through Boulder County open space, adding regional connection to Superior and Boulder			X	X				
2	Connection to Boulder through Boulder County open space.			X	X				
3	Extend Goodhue Ditch Trail across W Baseline Rd and North along Burlington North Santa Fe Railroad.			X	X				
4	SH 42 north of Empire Rd		Off-street shared path needed. Completes north-south regional trail connection through Louisville with future SH42 multi-use path.		X				
5	Planned and Funded Project: SH 42 multi-use path		Off-street shared path needed. Adds comfort along wide road (2 lanes each direction). Connects trail users to from Lake to Lake Trail to regional trail network.		X				SH 42 is a CDOT highway improvement project to include multi-use shared pathway and/or on -street bike lanes. The project is currently funded. Design and construction timing is to be determined.
6	96th St South of Dillon Rd to Northwest Pkwy	Missing Trail Connection	Off-street shared path needed. Completes north-south regional trail connection through Louisville with future SH42 multi-use path.		X				
7	S104th St south of Northwest Pkwy		Off-street gravel trail or shared path needed. Adds north-south connection from Coal Creek Trail to Rock Creek Trailhead and the larger regional trail network.	X	X				
Underpasses and Overpasses									
1	Deferred Maintenance: existing underpass at US36 and Damyrovich Open Space	Tight turn radius and minimal visibility is causing safety issues	Maintenance - Better visibility and wider turn radius entering and existing underpass are needed for safety reasons.	N/A	N/A				
2	West Dillon Rd and McCaslin Blvd	Signalized intersection connecting future off-street shared path across West Dillon Rd	Underpass needed - High-crash area (east of intersection) on wide road (2 lanes in each direction, medians, turn lanes).	N/A	N/A				
3	West Dillon Rd at Coal Creek Trail/Powerline Trail	No crossing infrastructure.	Underpass needed - Wide road (2 lanes in each direction, medians). Connection missing from Powerline Trail to Coal Creek Trail. Would support connection to regional trail network.	N/A	N/A				
4	Deferred Maintenance: underpass at Coal Creek Trail and West Dillon Road	Flooding at underpass causing safety issues	Better drainage infrastructure needed to prevent underpass flooding.	N/A	N/A				
5	West Dillon Rd and South 88th St	Signalized intersection connecting future off-street shared path from West Dillon south to 88th and north to existing path.	Underpass Needed -High crash intersection despite signalized crossing.	N/A	N/A				
6	Warembourg Open Space ditch at W Dillon Rd		Underpass needed	N/A	N/A				
7	East South Boulder Rd and Via Appia Way	Signalized crossing connecting Lake to Lake Trail and Goodhue Trail across South Boulder Rd	Underpass needed - Wide road (2 lanes in each direction, median, turn lanes). Intersection has high concentration of crashes.	N/A	N/A				
8	Railroad tracks crossing at Bullhead Gulch Open Space		Underpass needed	N/A	N/A				
9	East South Boulder Rd and Main St	Signalized pedestrian crossing to the west of rail road tracks.	Underpass needed - Connection from future off-street shared trail to on-street bike lane on Centennial Dr needed.	N/A	N/A				
10	South Boulder Rd and Courtesy Rd	Signalized Intersection connecting future off-street shared paths on South Boulder and Courtesy	Underpass needed - Wide road intersecting roads (2 lanes in each direction, median on South Boulder, turn lanes). Intersection with high-concentration of crashes.	N/A	N/A				
11	West Boulder Rd at Farmers Trail	HAWK signal on west side of intersection	Above-grade crossing needed - Wide road (2 lanes in each direction, medians, turn lanes). Intersection has high concentration of crashes despite existing HAWK.	N/A	N/A				
12	Courtesy Road and Old Town Link Trail		underpass needed	N/A	N/A				
13	Deferred Maintenance: underpass at Coal Creek Trail and CTC Open Space	Tight turn radius, deficient lighting, and flooding make this underpass unsafe.	Lighting and drainage improvements needed	N/A	N/A				

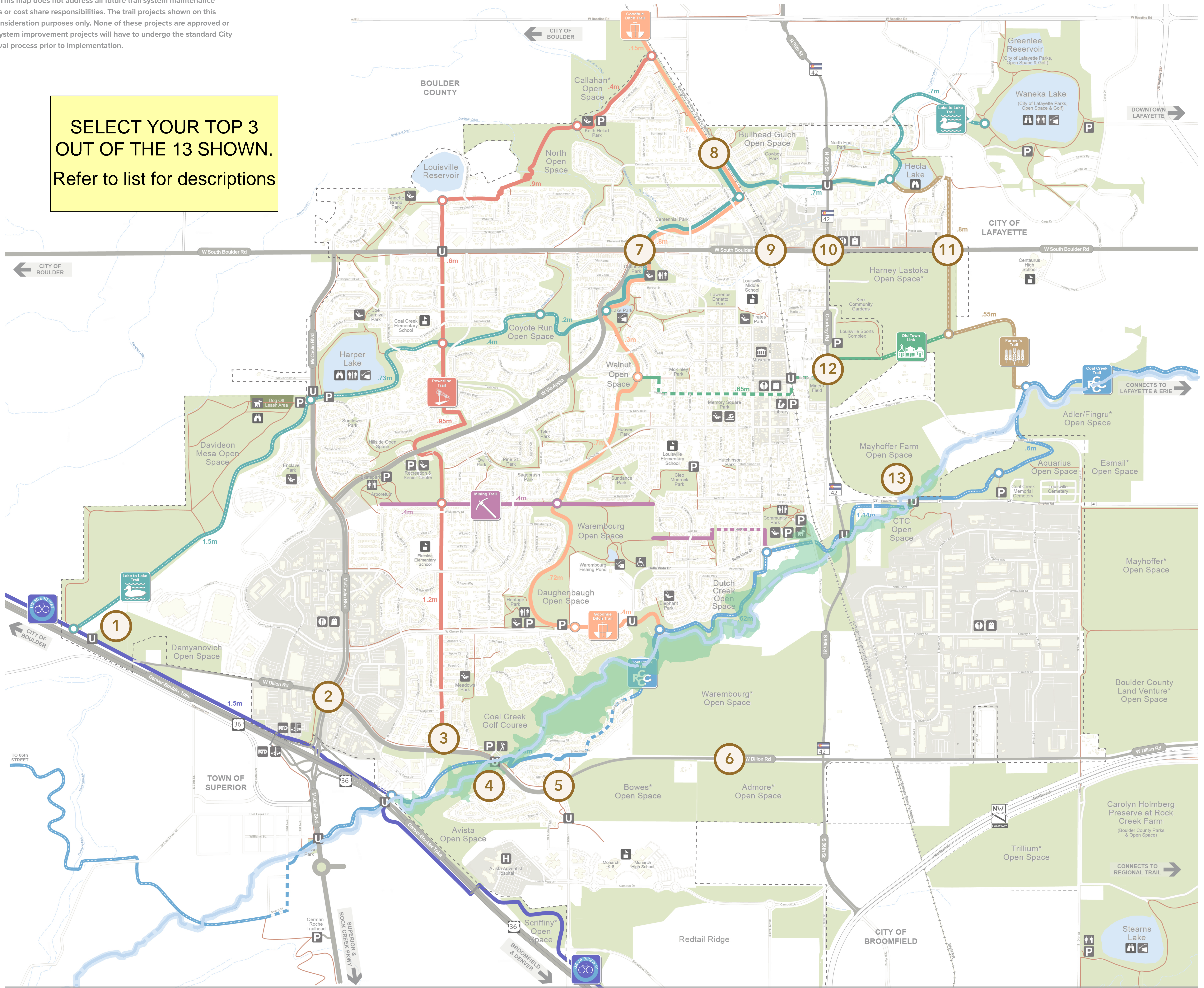
Neighborhood Connectors (within Louisville)									
1	Centennial Parkway to Davidson Mesa Trail		Off-street gravel trail needed. Connects users from Lake to Lake Trail east to on-street bike lanes on Centennial and Century, and to proposed future off-street shared path on McCaslin (#3).	X					
2	Complete Mining Trail	Missing Trail Connections	Off-Street Shared Path Needed - Add east-west connection between Arboretum and McCaslin and add north-south connection along the east side of Warembourg Open Space to Bella Vista Dr.		X				The City is already planning on adding these trail connections
3	Powerline Trail switchbacks at North Open Space	Unsafe trail condition	Trail alignment revision needed - current switchbacks cause safety issues.	X					
4	Powerline Trail west to proposed regional trail through Boulder County Open Space.		off-street gravel path needed	X					This connection would go through a "preserve" classified area on North Open Space, however this connection has been mentioned by several people at the 11/14/25 Open Space and Trails Workshop and by Toole Design (trails subconsultant). PROS Staff must weigh the pros and cons of this trail connection and direct DTJ to keep or remove connection from this exhibit.
5	Goodhue Trail extension north to W Baseline Rd	Missing Trail Connection	off-street shared path needed		X				This connection would go through a "preserve" classified area on North Open Space, however this connection has been mentioned by several people at the 11/14/25 Open Space and Trails Workshop and by Toole Design (trails subconsultant). PROS Staff must weigh the pros and cons of this trail connection and direct DTJ to keep or remove connection from this exhibit.
6	Via Appia to North Open Space	Missing Trail Connection	Off-Street Shared Path Needed. Adds east-west connection between Goodhue Trail, Lake to Lake Trail, and Powerline Trail.		X				This connection would go through a "preserve" classified area on North Open Space, however this connection has been mentioned by several people at the 11/14/25 Open Space and Trails Workshop and by Toole Design (trails subconsultant). PROS Staff must weigh the pros and cons of this trail connection and direct DTJ to keep or remove connection from this exhibit.
7	Garfield to Centennial	Missing Trail Connection	Off-Street gravel Path Needed. Adds north-south connection between Centennial Park, Goodhue Trail, Lake to Lake Trail, and proposed connection to Powerline Trail (#5).		X				Existing drainage via Goodhue Ditch and Highline Lateral canal in this area. Unsure of trail feasibility.
8	Louisville Middle School	Missing Trail Connection	Off-Street Shared Path Needed. Connects users to from school to on-street bike lane on South Boulder Rd and Centennial Rd, which connects to proposed connection to Powerline Trail (#5), Goodhue Trail, and Lake to Lake Trail.		X				
9	North of South Boulder Rd, east of SH 42	Missing Trail Connection	Off-Street Shared Path Needed. Adds comfort along wide, high-crash road (2 lanes each direction, median, and turn lanes). Connects trail users from future off-street shared path along SH 42 to Farmers Trail.	X	X				
10	Downtown to Rec Center Mixed-Use urban trail	Pine St Downtown to Louisville Elementary has no on-street bike lane and narrow sidewalk is directly adjacent road. Pine St from Louisville Elementary to Goodhue trail has on-street bike lanes and sidewalks are slightly separated from roadway. Tyler Ave from Pine St to Via Appia has an on-street bike lane and narrow sidewalk is directly adjacent road.	Off-street shared path Downtown connector trail needed. Provides east-west connection from Via Appia to Downtown.		X				Some existing bike and pedestrian paths exist, but a route this significant warrants a wider, off-street paved multi-use path. Entire route lacks shade for pedestrians, minimizing functionality of sidewalks on sunny days.
11	South St from Downtown to Walnut Open Space	Missing Trail Connection	Off-Street Shared Path Needed. Provides east-west connection from Goodhue Trail to future off-street shared path along SH 42.		X				
12	Mayhoffer Open Space		Connection needed through Mayhoffer Open Space to Farmer's Trail - proposed route TBD						
13	Cherry Street from Daughenbaugh Open Space to McCaslin Blvd	Unsafe proximity between vehicles and cyclists	Separated off-street pedestrian path to become multi-use (bike and pedestrian) to replace existing on-street bike lane. Provides east-west connection between Goodhue Trail and Powerline Trail and to proposed McCaslin shared path (#3).	X	X				
14	Bella Vista Drive south to Goodhue Trail underpass		off-street shared path needed		X				
15	Dillon Rd to Coal Creek Trail	Missing Trail connection	off-street gravel path needed.	X					
16	US36 to St Andrews Ln (Avista)		Off-Street Shared Path Needed. Completes connection from Coal Creek Golf Course, Monarch High School, and Bowes Open Space to US36 bikeway.		X				
17	Complete connection between 88th and US 36	Missing Trail Connection	Off-Street Shared Path Needed. Connects users to regional trail network from Coal Creek Trail.		X				
18	Warembourg Open Space ditch crossing Dillon Rd		Establish a new, off-street connection between the Campus Drive extension (Red Tail Ridge) and the Coal Creek Regional Trail	X					
19	Railroad tracks north of Dillon Rd to proposed S 96th path		Off-Street Shared Path Needed, connects future SH42/S 96th Multi-use path southeast to Dillon Rd.	X	X				

The Social Trails inventory will require further analysis to determine the status of social trails. The Trails System Plan will define review criteria to establish an updated prioritization list of projects and recommendations for Capital Improvement Program (CIP).

All approved 'Trails Plan Opportunity Projects' (projects listed in the plan) will undergo further evaluation based on criteria such as, access and connectivity, Safety, Habitat Protection, Maintenance, Cost, and Staff Resource Availability.

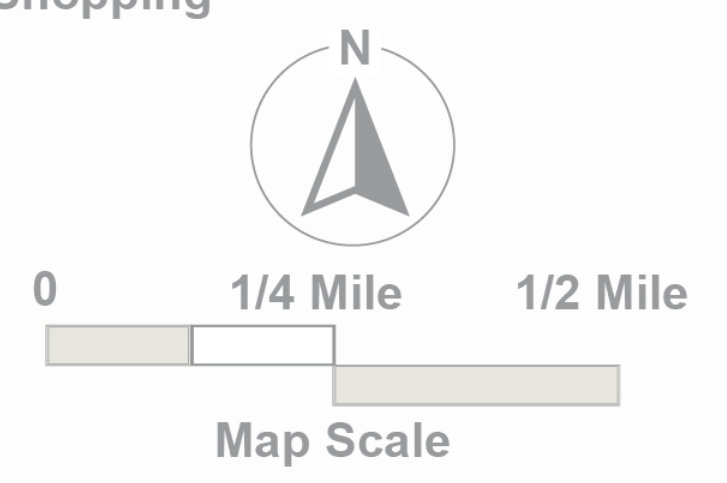
Note: This map reflects potential Capital Improvement Plan (CIP) projects and priorities. This map does not address all future trail system maintenance responsibilities or cost share responsibilities. The trail projects shown on this map are for consideration purposes only. None of these projects are approved or final. All trail system improvement projects will have to undergo the standard City Council approval process prior to implementation.

SELECT YOUR TOP 3 OUT OF THE 13 SHOWN.
Refer to list for descriptions



Map Legend (Existing)

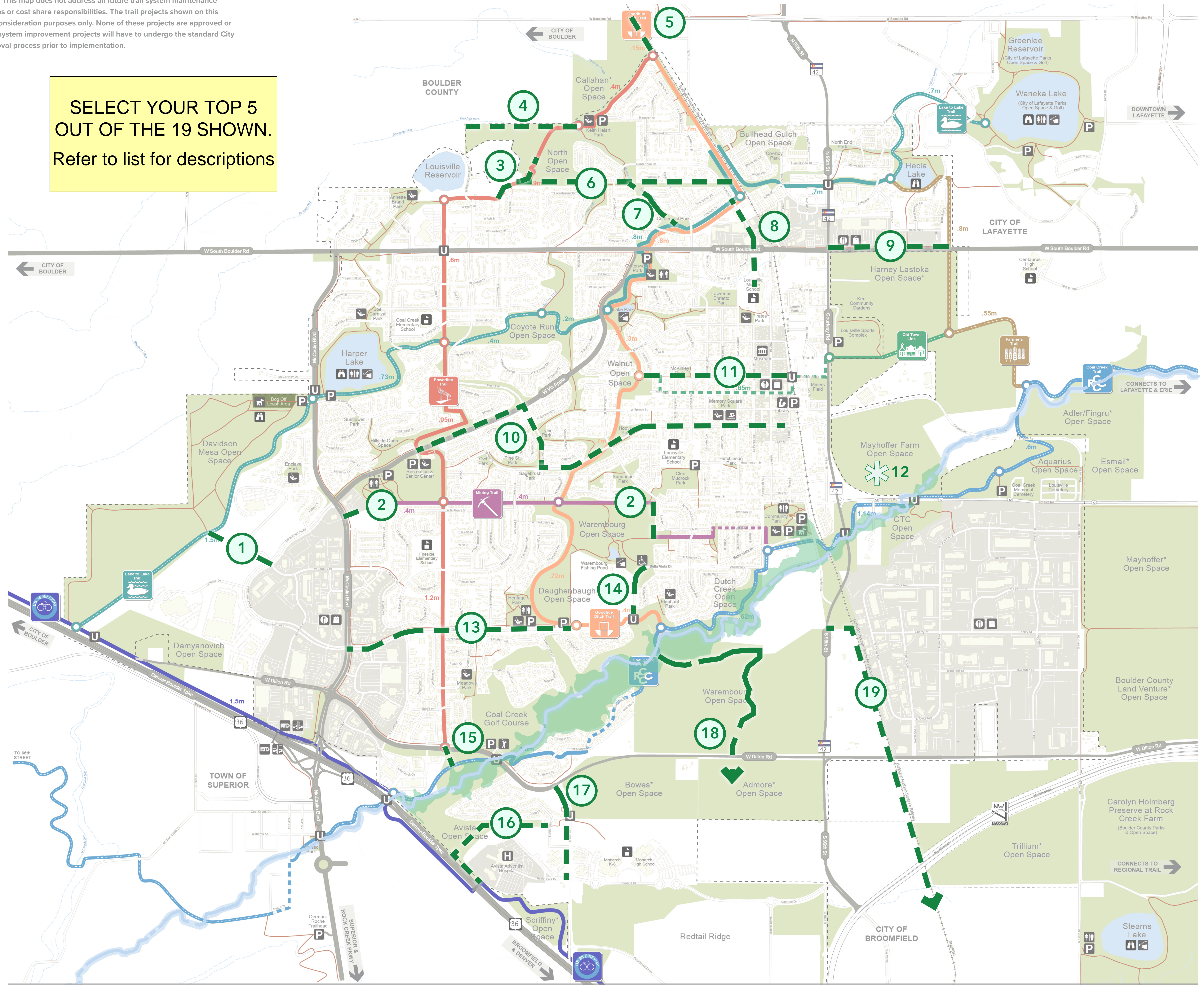
<p>Primary Trails</p> <ul style="list-style-type: none"> Lake to Lake Trail Goodhue Ditch Trail Powerline Trail Old Town Link Farmers Trail Mining Trail Coal Creek Trail US 36 Bikeway 	<p>Hard Surface Trails</p> <ul style="list-style-type: none"> <p>On-Street Routes</p> <ul style="list-style-type: none"> 	<p>Soft Surface Trails</p> <ul style="list-style-type: none"> 	<p>Secondary & Neighborhood Trails</p> <ul style="list-style-type: none"> <p>Secondary Trails & Line Types</p> <ul style="list-style-type: none"> Coal Creek Railroad Ditches & Laterals 	<p>Property Designations</p> <ul style="list-style-type: none"> Louisville Parks & Open Space Jointly Owned City & County Open Space Dog Off Leash Area Louisville City Limits Shopping & Retail District Lakes, Ponds & Reservoirs Floodplain 	<p>Icons</p> <ul style="list-style-type: none"> Underpass Parking Handicap Parking Dog Off Leash Area Fishing Lake Hospital Wildlife Viewing School Library Playground Restrooms (seasonally available) Museum Park and Ride RTD Stop Swimming Pool Golf Course Shopping
--	--	--	--	---	---



NOT FOR REGULATORY APPROVAL, PERMITTING, OR CONSTRUCTION

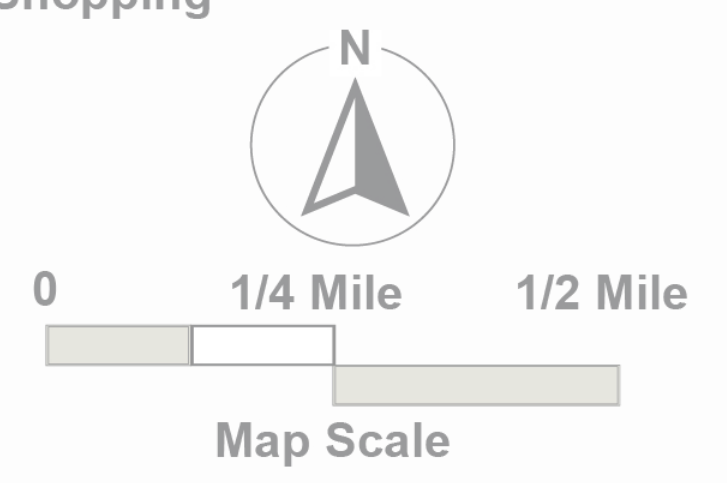
Note: This map reflects potential Capital Improvement Plan (CIP) projects and priorities. This map does not address all future trail system maintenance responsibilities or cost share responsibilities. The trail projects shown on this map are for consideration purposes only. None of these projects are approved or final. All trail system improvement projects will have to undergo the standard City Council approval process prior to implementation.

SELECT YOUR TOP 5 OUT OF THE 19 SHOWN.
Refer to list for descriptions



Map Legend (Existing)

<p>Primary Trails</p> <ul style="list-style-type: none"> Lake to Lake Trail Goodhue Ditch Trail Powerline Trail Old Town Link Farmers Trail Mining Trail Coal Creek Trail US 36 Bikeway 	<p>Hard Surface Trails</p> <ul style="list-style-type: none"> <p>Soft Surface Trails</p> <ul style="list-style-type: none"> <p>On-Street Routes</p> <ul style="list-style-type: none"> 	<p>Secondary Trails & Line Types</p> <ul style="list-style-type: none"> Secondary & Neighborhood Trails Coal Creek Railroad Ditches & Laterals 	<p>Property Designations</p> <ul style="list-style-type: none"> Louisville Parks & Open Space Jointly Owned City & County Open Space Dog Off Leash Area Louisville City Limits Shopping & Retail District Lakes, Ponds & Reservoirs Floodplain 	<p>Icons</p> <ul style="list-style-type: none"> Underpass Parking Handicap Parking Dog Off Leash Area Fishing Lake Hospital Wildlife Viewing School Library Playground Restrooms (seasonally available) Museum Park and Ride RTD Stop Swimming Pool Golf Course Shopping
--	---	---	---	---



NOT FOR REGULATORY APPROVAL, PERMITTING, OR CONSTRUCTION